



THE MOST POWERFUL PRO EVER.



MORE CONCENTRATED

30 MINUTE RAINFAST WARRANTY

CONSISTENT PERFORMANCE

THE NEXT GENERATION OF ROUNDUP® HERBICIDE

For more than 30 years, the Roundup® family of herbicides has built a reputation for consistent quality and professional performance in the GREEN industry. Roundup PROMAX™ is the next generation in the evolution of this high performing family.

MORE CONCENTRATED

Roundup PROMAX is a new potassium salt formulation. This smaller molecule allows concentration of more active ingredients in every gallon.



MORE CONCENTRATED ■ 30 MINUTE RAINFAST WARRANTY ■ EASIER TO HANDLE

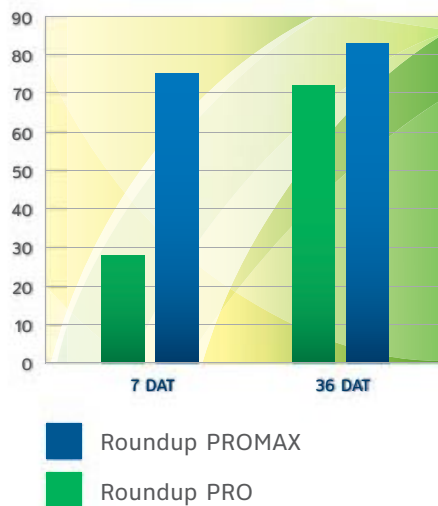
HOW ROUNDUP PROMAX™ PERFORMS VERSUS ROUNDUP PRO®

With its more concentrated formula, one gallon of Roundup PROMAX contains the glyphosate acid equivalent of 6 quarts of Roundup PRO®. So if you used 2²/₃ oz. of Roundup PRO to make a gallon of spray solution, you'll only need 2 oz. of Roundup PROMAX to make the same 1 gallon of spray solution.



IMPROVED PERFORMANCE VS. ROUNDUP PRO

Percent White Clover Control — 1.5 lb ae/A



Source: University Field Trial 2007D01004, Southern Illinois University, applied June 14, 2007, 87 GPA spray volume.

DAT—Days After Treatment

CONSISTENT, PROFESSIONAL PERFORMANCE

Like the Roundup PRO you've come to know and trust, Roundup PROMAX controls a broad spectrum of weeds with virtually no re-growth. Roundup PROMAX has a unique surfactant system that's more concentrated and gets to the root faster, so you don't have to worry so much about the weather or costly callbacks.

SYMPTOMOLOGY, 0.38 LB AE/ACRE — 5 DAT



Roundup PROMAX



Imitator

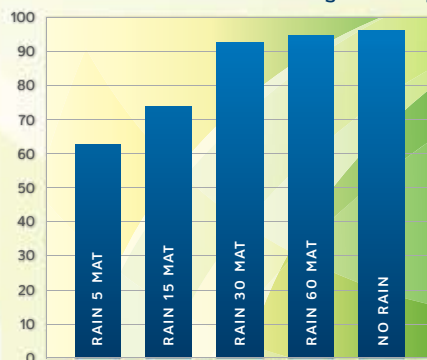


Untreated

Source: 2007 Monsanto greenhouse trials. Applied at the recommended label rates (a.e.).

GREENHOUSE EFFICACY & RAINFASTNESS STUDY OF ROUNDUP PROMAX

Percent Control — Average of 4 Species



Monsanto Greenhouse Study 07552071. Average of four species shown, 87 GPA applications.

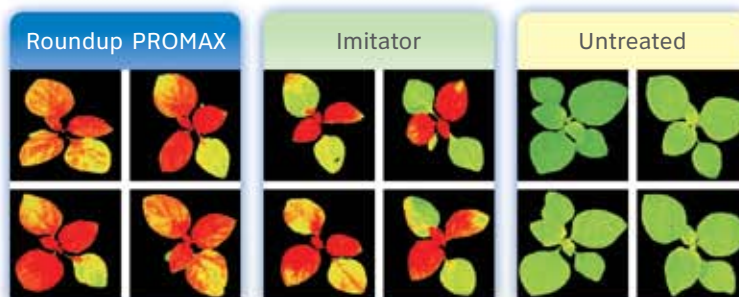
MAT—Minutes After Treatment

30 MINUTE RAINFAST WARRANTY

The unique surfactant system of Roundup PROMAX allows the solution to penetrate weed leaf surfaces faster, which means Roundup PROMAX is rainfast in half the time of Roundup PRO.

Roundup PROMAX performance has been demonstrated in fluorescence imaging research. The images to the right, comparing four examples of the same weed, were photographed 2 days after treatment.

CONSISTENCY: FLUORESCENCE IMAGING 0.38 LB AE/ACRE — 2 DAT



Source: 2007 Monsanto Research Test; applications applied at the recommended label rates (a.e.).

- Severely impaired chlorophyll systems
- Damaged chlorophyll systems
- Healthy unaffected chlorophyll systems

USE JUST
2 OUNCES
PER GALLON OF WATER
FOR MOST APPLICATIONS

APPLICATIONS AND USE RECOMMENDATIONS

Roundup PROMAX™ herbicide is used to control weeds and brush in professional vegetation management situations such as turf management, landscaping, roadsides and railroad rights of way.

TRIM & EDGE

(RATE: 2 OUNCES PER GALLON OF WATER.)

Roundup PROMAX goes where mechanical trimmers can't, so it's ideal for use along fence lines, in sidewalk cracks, at curbside and around building perimeters.

SHRUB BEDS

(RATE: 2 OUNCES PER GALLON OF WATER.)

Hand weeding takes time. String trimmers disturb the mulch layer. Neither method attacks the roots. Roundup PROMAX kills the roots and eliminates time-consuming callbacks.

TURF RENOVATION

(RATE: 2 OUNCES PER GALLON OF WATER.)

Unlike mechanical renovation, which can bring seeds to the surface and make the problem worse, Roundup PROMAX destroys the entire plant for long-lasting control. You can then re-seed or sod directly on treated areas with confidence.

BRUSH & VINES (LOW VOLUME APPLICATIONS)

(RATE: 5 TO 9 OUNCES PER GALLON OF WATER.)

Mechanical brush removal encourages even denser regrowth, while a single low volume application of Roundup PROMAX prevents regrowth because it's absorbed into the roots of the weeds. It's effective against a broad spectrum of tough brush, weeds and vines.

TREE RINGS

(RATE: 2 OUNCES PER GALLON OF WATER.)

When you use Roundup PROMAX to eliminate the weeds around tree trunks, the tree does not have to compete for food and water. University trials show that trunk circumferences in treated plots increased an average of 144% over trunks in untreated plots. In addition, the use of Roundup PROMAX eliminates the damage that can be caused by string trimmers, which can remove bark and open the tree to insects and disease.

DORMANT TURFGRASS

(RATE: 5 TO 44 OUNCES PER ACRE*.)

Roundup PROMAX may be used to control or suppress many winter annual weeds and tall fescue for effective release of dormant bermudagrass and bahiagrass turf. Treat only when turf is dormant and prior to spring greenup.

Also available in 30 gallon drum.



SEE YOUR RETAILER FOR MORE INFORMATION
ON HOW TO PUT THIS PRO TO WORK FOR YOU.

*Treatments to dormant turfgrass in excess of 16 ounces per acre may result in injury or delayed greenup in highly maintained areas.

ALWAYS READ AND FOLLOW PESTICIDE LABEL DIRECTIONS. Roundup®, Roundup PRO® and Roundup PROMAX™ are trademarks of Monsanto Technology LLC. ©2008 Monsanto Company. [18950Apgd] 1E-8N-08-3148 REV 08/08